



INDUSTRIAL QUALITY & STRONG : Emergency Keyswitches

SS-304 PLATE

NARROW-SLIMLINE AND MEDIUM SIZE KEYSWITCHES



SEK-200-KEYSWITCH



SEK-700-KEYSWITCH



SEK-100-KEYSWITCH

Same Keycode or All Different Keycodes Available on Request

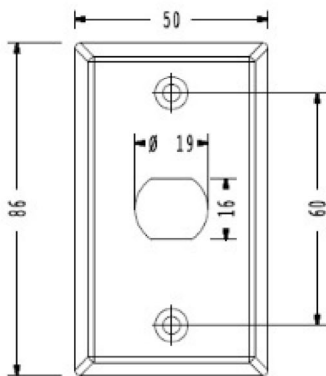
Specification

- Standard Structure: Steel Button
- Current Rating: 3A@36VDC Max
- Output Contact: NO/NC/COM
- Mechanical Life: 500000 tested

Wide Options & Variations Available : Momentary , On-Off , SPDT , DPDT , Inbuilt Timer Relay , With Tamper Output, Inbuilt DMS (Door Monitoring)

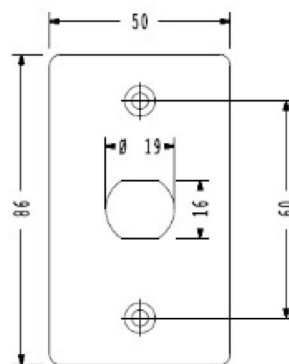
- Actual Product might look Slightly different from Photos shown above

Wiring Diagram



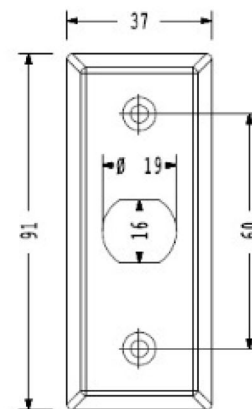
TOP VIEW

SEK-200-KEYSWITCH



TOP VIEW

SEK-700-KEYSWITCH



TOP VIEW

SEK-100-KEYSWITCH

