

# SEKURIT EISODOS SERIES EM LOCK WITH WIRELESS KEYPAD-CARD READER & REMOTE

## RELIABLE WIRELESS SOLUTION WITH EASY AND FAST INSTALLATION

## SPECIFICATIONS



EISODOS WIRELESS EM LOCK



WIRELESS KEYPAD WITH CARD READER ( BATTERY OPERATED )



WIRELESS REMOTE

<b>Operating Voltage</b> Wireless Keypad Wireless Exit Button	3units of AAA batteries 2023 Lithium battery
<b>Current</b> Idle Current  Working Current	Wireless Keypad: <10uA Wireless Exit Button: <10uA Wireless Keypad: <20mA; Mini Controller: <40mA Wireless Exit Button: <10uA
<b>Communication Frequency</b>	<b>2.4G</b>
<b>Communication Distance</b>	<b>15m Maximum</b>
<b>Relay Contact Load</b>	<b>2Amp Maximum</b>
<b>Environment</b> Operating Temperature Operating Humidity	<b>Indoor</b> -20°C~60°C(-4°F~140°F) 0%~86%RH
<b>Physical</b> Dimensions  Unit Weight	<b>ABS Shell</b> Wireless Keypad: L135 x W54 x D19(mm) Wireless Exit Button: L83 x W40 x D16(mm)

## SEKURIT EISODOS EM LOCK WITH WIRELESS KEYPAD AND REMOTES

- > 500 PIN / card users
- > PIN length: 4 ~ 8 digits
- > Communication distance: 15m Max
- > Pulse mode, toggle mode
- > Tri-color LED status display
- > Ultra low power consumption (wireless keypad<10uA, Wireless Exit Button: <10uA)

## SEKURIT EISODOS WIRELESS EM LOCK SOLUTIONS WITH BATTERY OPERATED WIRELESS KEYPAD-CARD READER & REMOTES

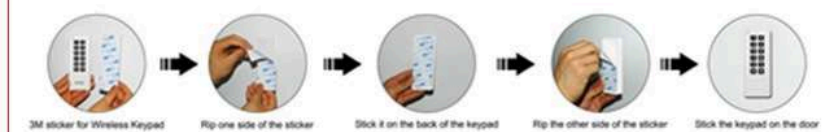
### Technical Specifications :

- **Holding Force** : Up to 600 lbs
- **Weight ( Magnet )** : 1.1 kg (±1%)
- **Dimensions** : Magnet - (L)250x(W)42x(T)25 mm  
Armature - (L)180x(W)38x(T)11 mm
- **Anti Residual Magnetism Kick Off Button**
- **Current Draw** : 12V /550 mA ; 24V /320mA (±5%)

( Miroprocessor based )

- 1) Standby Current without lock:
  - 70mA to 80mA @12VDC
- 2) Exit Button Trigger Input
- 3) MOV prevents voltage spike and surge current
- 4) Relock time delay
- 5) 12-24 VDC INPUT

### Fast installation within 3 minutes



## EISODOS-600-WIRELESS EM LOCK



# SEKURIT EISODOS SERIES EM LOCK WITH WIRELESS KEYPAD-CARD READER & REMOTE

## RELIABLE WIRELESS SOLUTION WITH EASY AND FAST INSTALLATION

## SPECIFICATIONS



EISODOS-1200-WIRELESS EM LOCK

EISODOS WIRELESS EM LOCK



WIRELESS KEYPAD WITH CARD READER ( BATTERY OPERATED )



WIRELESS REMOTE

<b>Operating Voltage</b> Wireless Keypad Wireless Exit Button	3units of AAA batteries 2023 Lithium battery
<b>Current</b> Idle Current  Working Current	Wireless Keypad: <10uA Wireless Exit Button: <10uA Wireless Keypad: <20mA; Mini Controller: <40mA Wireless Exit Button: <10uA
<b>Communication Frequency</b>	2.4G
<b>Communication Distance</b>	15m Maximum
<b>Relay Contact Load</b>	2Amp Maximum
<b>Environment</b> Operating Temperature Operating Humidity	<b>Indoor</b> -20°C~60°C(-4°F~140°F) 0%~86%RH
<b>Physical</b> Dimensions  Unit Weight	<b>ABS Shell</b> Wireless Keypad: L135 x W54 x D19(mm) Wireless Exit Button: L83 x W40 x D16(mm)

## SEKURIT EISODOS EM LOCK WITH WIRELESS KEYPAD AND REMOTES

- > 500 PIN / card users
- > PIN length: 4~8 digits
- > Communication distance: 15m Max
- > Pulse mode, toggle mode
- > Tri-color LED status display
- > Ultra low power consumption (wireless keypad<10uA, Wireless Exit Button: <10uA)

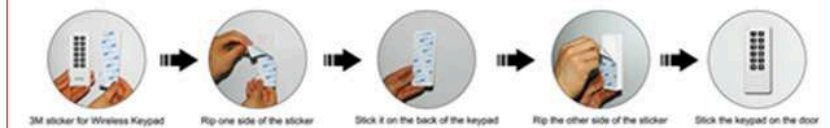
## SEKURIT EISODOS WIRELESS EM LOCK SOLUTIONS WITH BATTERY OPERATED WIRELESS KEYPAD-CARD READER & REMOTES

- Lock Holding Force : Up to 1200 lbs
- Weight ( Magnet ) : 2.5 kg (±1%)
- Dimensions : Magnet - (L)266x(W)67x(T)39 mm  
Armature - (L)185x(W)61x(T)16.5 mm
- Anti Residual Magnetism Kick Off Button
- Current Draw : 12V /550 mA ; 24V / 320 mA (±5%)

( Miroprocessor based )

- 1) Standby Current without lock:
  - 70mA to 80mA @12VDC
- 2) Exit Button Trigger Input
- 3) MOV prevents voltage spike and surge current
- 4) Relock time delay
- 5) 12-24 VDC INPUT

### Fast installation within 3 minutes



## EISODOS-1200-WIRELESS EM LOCK

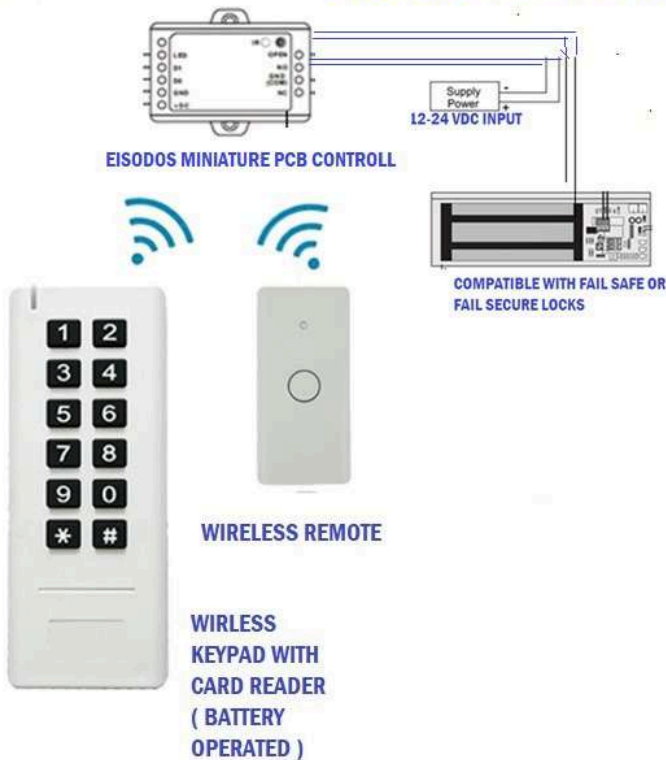


# SEKURIT EISODOS- WIRELESS PCB CONTROLLER

SMALL SIZE CONTROLLER

## RELIABLE WIRELESS SOLUTION WITH EASY AND FAST INSTALLATION

## SPECIFICATIONS



<b>Operating Voltage</b> Wireless Keypad Wireless Exit Button	3units of AAA batteries 2023 Lithium battery
<b>Current</b> Idle Current  Working Current	Wireless Keypad: <10uA Wireless Exit Button: <10uA Wireless Keypad: <20mA; Mini Controller: <40mA Wireless Exit Button: <10uA
<b>Communication Frequency</b>	2.4G
<b>Communication Distance</b>	15m Maximum
<b>Relay Contact Load</b>	2Amp Maximum
<b>Environment</b> Operating Temperature Operating Humidity	<b>Indoor</b> -20°C~60°C(-4°F~140°F) 0%~86%RH
<b>Physical</b> Dimensions  Unit Weight	<b>ABS Shell</b> Wireless Keypad: L135 x W54 x D19(mm) Wireless Exit Button: L83 x W40 x D16(mm)

- > 500 PIN / card users
- > PIN length: 4~8 digits
- > Communication distance: 15m Max
- > Pulse mode, toggle mode
- > Tri-color LED status display
- > Ultra low power consumption (wireless keypad<10uA, Wireless Exit Button: <10uA)



### Product Size

Wireless Lock:  
L135xW54xD19



Wireless Exit Button:  
L83xW95xD39



Controller:  
L65xW55xD18



**SEKURIT EISODOS WIRELESS SOLUTIONS WITH BATTERY OPERATED WIRELESS KEYPAD-CARD READER & REMOTES**